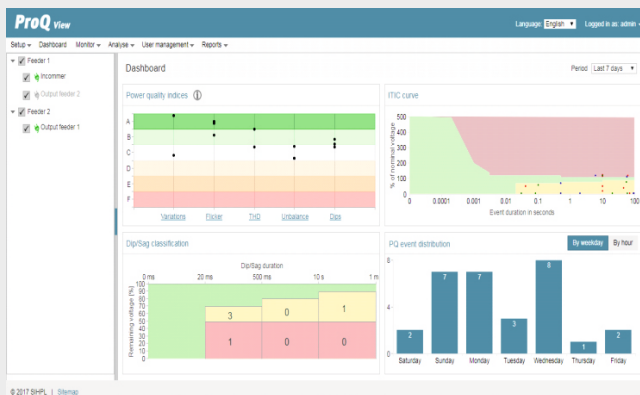


Philosophy

Secure's focus is on innovation and we are committed to the on-going refinement of products and solutions which comprehensively meet the needs of our customers.

Our pragmatic use of new technologies and concepts has established an enviable track record of products and services to support our customers wholesomely in markets across the world to save money, conserve energy and live in comfort.



ProQ View

Setup Dashboard Monitor Analyse User management Reports

EN50160 compliance

From 23-Jul-2017 to 29-Jul-2017 Metering location: Incomer Year: 2017 View: View 30 Day: All Report

Parameter name	Lower limit	Upper limit	Compliance limit (% of time)	Actual compliance (% of time)	Total samples	Sample inside range	Sample outside range	Status
Factor L1	NA	1	99	99	32	0	32	●
Factor L2	NA	1	95	100	58	58	0	●
Factor L3	NA	1	95	100	58	58	0	●
Unbalance	0 (% of max Ph-Bal)	2 (% of max Ph-Bal)	95	100	379	379	0	●
Main regulating voltage V1	NA	9.9	99	NA	0	0	0	No sample available
Main regulating voltage V2	NA	9.9	99	100	144176	144176	0	●
Frequency condition 1	-1 (% of Freq)	1 (% of Freq)	99.5	100	43216	43216	0	●
Frequency condition 2	-6 (% of Freq)	4 (% of Freq)	100	100	43216	43216	0	●
Voltage V1 condition 1	-10 (% of Vdri)	10 (% of Vdri)	95	100	379	379	0	●
Voltage V2 condition 1	-10 (% of Vdri)	10 (% of Vdri)	95	99.58	719	719	3	●
Voltage V3 condition 1	-10 (% of Vdri)	10 (% of Vdri)	95	99.58	719	719	3	●
Voltage V1 condition 2	-15 (% of Vdri)	15 (% of Vdri)	100	100	719	719	0	●
Voltage V2 condition 2	-15 (% of Vdri)	15 (% of Vdri)	100	99.58	719	719	3	●
Voltage V3 condition 2	-15 (% of Vdri)	15 (% of Vdri)	100	100	719	719	0	●

ProQ View

Setup Dashboard Monitor Analyse User management Reports

PQ events

From: 17-Jul-17 10:29 To: 03-Aug-17 10:29 All types All phases All

Metering location	Meter serial number	Occurrence time	Restoration time	Type	Phase	Duration	Magnitude (%)	Pre and post value (%)
Incomer	MTR00001	19-Jul-17 11:20:00.000	19-Jul-17 11:20:00.000	Sag	Voltage L2	100ms	60	✓
Incomer	MTR00001	19-Jul-17 04:40:50.000	19-Jul-17 04:40:50.000	Sag	Voltage L1	3s	80	✓
Incomer	MTR00001	20-Jul-17 20:00:00.000	20-Jul-17 20:00:12.000	Sag	Voltage L2	12s	90	✓
Incomer	MTR00001	23-Jul-17 03:28:24.000	23-Jul-17 03:28:24.000	Sag	Voltage L2	100ms	60	✓
Incomer	MTR00001	26-Jul-17 17:34:56.000	26-Jul-17 17:35:56.000	Swell	Voltage L1	1m	119	✓
Incomer	MTR00001	26-Jul-17 16:39:36.000	26-Jul-17 16:39:35.000	Interruption	Voltage L1	59s	4.9	✓
Incomer	MTR00001	31-Jul-17 16:39:29.000	31-Jul-17 16:39:29.000	Sag	Voltage L1	10s	20	✓
Incomer	MTR00001	01-Aug-17 06:20:06.000	01-Aug-17 06:20:06.000	Interruption	Voltage L1	1m 30s	4.5	✓
Incomer	MTR00001	02-Aug-17 01:41:36.000	02-Aug-17 01:41:36.000	Sag	Voltage L1	10s	90	✓
Output feeder 2	MTR00002	21-Jul-17 09:59:00.000	21-Jul-17 09:59:00.000	Sag	Voltage L2	80ms	40	✓
Output feeder 2	MTR00002	21-Jul-17 21:42:31.000	21-Jul-17 21:42:36.000	Sag	Voltage L2	55s	90	✓
Output feeder 2	MTR00002	25-Jul-17 16:49:12.000	25-Jul-17 16:50:22.000	Interruption	Voltage L1	1m 10s	4	✓
Output feeder 2	MTR00002	25-Jul-17 20:03:33.000	25-Jul-17 20:03:33.000	Interruption	Voltage L2	30ms	5	✓
Output feeder 2	MTR00002	26-Jul-17 18:53:52.000	26-Jul-17 18:53:52.000	RVC	Voltage L3	500ms	4	✓
Output feeder 2	MTR00002	30-Jul-17 17:14:16.000	30-Jul-17 17:14:16.000	Swell	Voltage L3	1m	120	✓

India, SE Asia, Africa

sales_india@securemeters.com

www.securemeters.com/in

UK

sales_uk@securemeters.com

www.securemeters.com/uk

Australia

sales_australia@securemeters.com

www.securemeters.com/au

Europe

sales_europe@securemeters.com

www.securemeters.com/eu

Dubai

sales_middleeast@securemeters.com

www.securemeters.com/me

www.cewesecure.se

Power quality monitoring solution

Integrated solution for grid and industrial applications
ProQ View with ProQ 100



Power quality monitoring:

Internal and external disturbances in electricity networks such as switching, non-linear loads, faults and lightning interference, can often lead to power quality (PQ) events. ProQ View along with ProQ100 is a comprehensive PQ monitoring and analysis solution for grid and industrial applications. The solution provides extensive PQ data (such as real time parameters, PQ events, event snap-shots) which support monitoring and analysis through dash boards and reports. It helps grid operators and industrial consumer in e.g.

- Monitor and manage electricity grids and energy contracts
- Monitor supply quality and ensure regulatory compliance
- Analyze disturbances in industrial plant supply networks (e.g. origin), impact of these on sensitive loads and design solutions accordingly.

Features

Solution allows the user to carry out PQ related configuration, monitoring and reporting, such as sag, swell, flicker, interruption, harmonics, inter-harmonics, unbalance and compliance reporting to supply standards e.g. EN50160.

Data acquisition

- Supports up to 100 meters in the network
- Real-time acquisition of electrical parameters (such as instantaneous, energy, power) and other parameters related to power quality
- Configurable polling frequency from 1sec to 15 minutes
- Standard data communication interfaces and communication protocols e.g. MODBUS, IEC 61850 and PQDIF

Data Viewing and monitoring

- Viewing over intranet
- Consolidated dashboard for monitoring PQ health of overall system
- Facility to drilling down to individual locations and event data
- Tabular and graphical display of multiple-location data and multiple paramete

Reporting and analysis

- Extensive reporting e.g. PQ health of particular site, event logs with necessary data to help in analysis, events and supply quality compliance e.g. EN 50160

